

Downtown
DHA Raya Concept



GRAND LIFESTYLE

PREMIUM SERVICE APARTMENTS
GRAND 15

Facing Park, Fountains & Eiffel Tower

Commercial Brand Outlets



Good
Coffee
is
Here



**Commercial
Brand Outlet**



**Pharmacy
Brand Outlet**

A New Generation Of **Gionee** 

Super Selfie, Super Battery A1 A1 Plus



Super Performance
Faster Operation

With 1.3GHz quad-core processor, 1GB RAM and 16GB ROM, A1/A1 Plus delivers super performance and faster operation.

Super Selfie, Super Battery

Wearables Tablets Phones



Super Selfie, Super Battery A1 | A1 Plus

Wearables Phones

**IT Brand
Outlet**

**Facing Park,
Fountains &
Eiffel Tower**

Lower Ground

Commercial Brand Outlets

**Bahria Downtown
Raya Concept**





LIMITED
TIME
OFFER

Lower Ground

Payment Plan

Pre-Launch Offer

~~25,000~~ ^{Rate}
^{Sqft} **20,000** ^{Rate}
^{Sqft}

Commercial Brand Outlets

Area	Total Price	20% Down Payment	20% Confirmation	Installments (36)
155	3,100,000	620,000	620,000	51,667

Note: Corner, Facing Eiffel, Facing Boulevard, Facing Lobby units come with a premium of 10% additional charges



LIMITED
TIME
OFFER

Lower Ground

Payment Plan

Pre-Launch Offer

~~30,000~~ Rate
Sqft

25,000 Rate
Sqft

Brand Kiosk

Area	Total Price	20% Down Payment	20% Confirmation	Installments (36)
55	1,375,000	275,000	275,000	22,917

Note: Corner, Facing Eiffel, Facing Boulevard, Facing Lobby units come with a premium of 10% additional charges

**Facing Park,
Fountains &
Eiffel Tower**

Ground Floor

Commercial Brand Outlets

Bahria Downtown
Raya Concept





LIMITED
TIME
OFFER

Ground Floor

Payment Plan

Pre-Launch Offer

~~45,000~~ ^{Rate} ^{Sqft} **40,000** ^{Rate} ^{Sqft}

Commercial Brand Outlets

Area	Total Price	20% Down Payment	20% Confirmation	Installments (36)
350	14,000,000	2,800,000	2,800,000	233,333
230	9,200,000	1,840,000	1,840,000	153,333
190	7,600,000	1,520,000	1,520,000	126,667
185	7,400,000	1,480,000	1,480,000	123,333
200	8,000,000	1,600,000	1,600,000	133,333

Note: Corner, Facing Eiffel, Facing Boulevard, Facing Lobby units come with a premium of 10% additional charges



**LIMITED
TIME
OFFER**

Ground Floor

Payment Plan

Pre-Launch Offer

~~50,000~~ ^{Rate}
^{Sqft}

45,000 ^{Rate}
^{Sqft}

Brand Kiosk

Area	Total Price	20% Down Payment	20% Confirmation	Installments (36)
110	4,950,000	990,000	990,000	82,500

Note: Corner, Facing Eiffel, Facing Boulevard, Facing Lobby units come with a premium of 10% additional charges

The background of the image features a dark blue night sky with several colorful fireworks exploding in the upper left and center. On the left side, the lower portion of the Eiffel Tower is visible, showing its intricate lattice structure.

Premium **Service Apartments** with Private Terrace



1 Bed

Luxury Apartment



1 Bed

TV Lounge



1 Bed
Kitchen

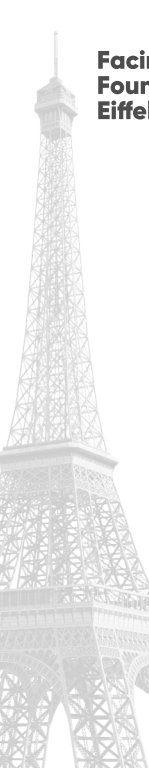


1 Bed
Bath



1 Bed Terrace

Park & Eiffel View

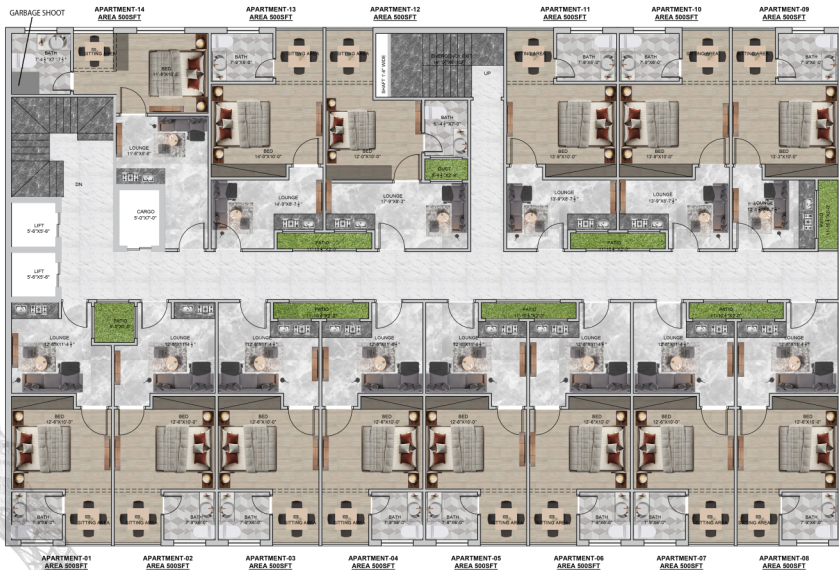


Facile Four Eiffel

Premium Service Apartments

Bahria Downtown

Raya Concept





LIMITED
TIME
OFFER

1 Bed

Luxury Apartments

Facing Eiffel Tower Park & Fountains

Pre-Launch Offer

~~17,000~~ Rate Sqft **16,000** Rate Sqft

Area	Total Price	20% Down Payment	20% Confirmation	Installments (36)
500	8,000,000	1,600,000	1,600,000	133,333

Note: Corner, Facing Eiffel, Facing Park & Fountains units come with a premium of 10% additional charges



**LIMITED
TIME
OFFER**

2 Bed

Luxury Apartments

Facing Eiffel Tower Park & Fountains

Pre-Launch Offer

~~17,000~~ Rate Sqft **16,000** Rate Sqft

Area	Total Price	20% Down Payment	20% Confirmation	Installments (36)
1,000	16,000,000	3,200,000	3,200,000	266,667

Note: Corner, Facing Eiffel, Facing Park & Fountains units come with a premium of 10% additional charges

A Project of



We Commit, **We Deliver**

